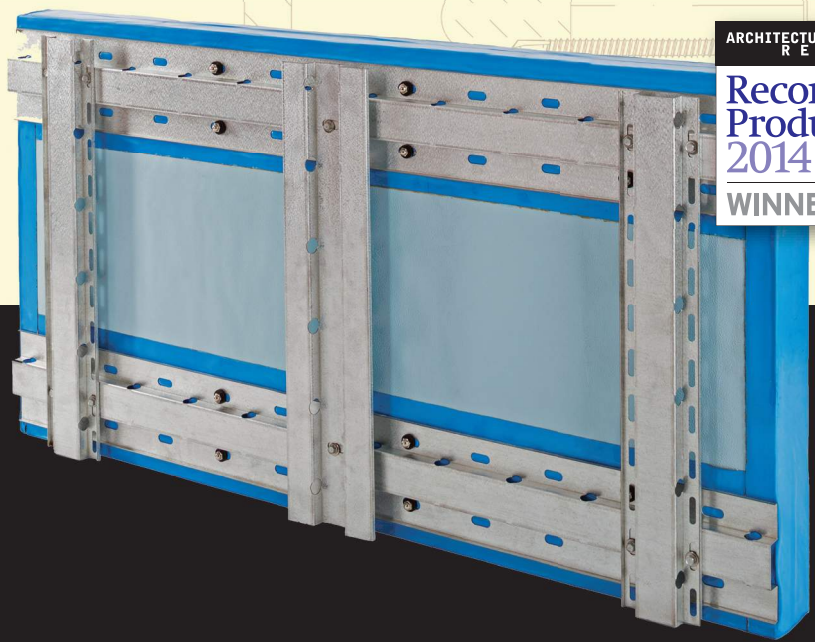




**KNIGHT**  
WALL SYSTEMS

ARCHITECTURAL  
RECORD  
**Record  
Products  
2014**  
WINNER



# HCI-SYSTEM: HORIZONTAL CONTINUOUS INSULATION SYSTEM ALLOWS FOR EASY, CODE-COMPLIANT VERTICAL RAIN SCREEN CLADDING ATTACHMENT

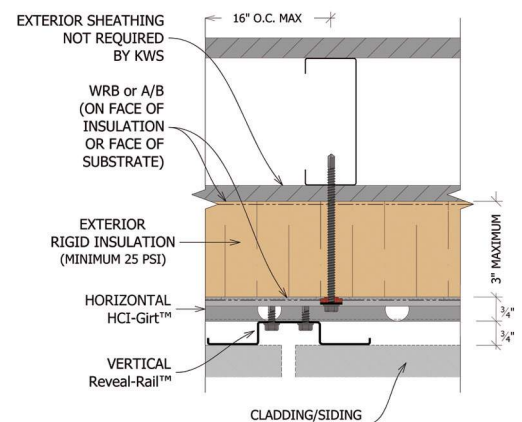
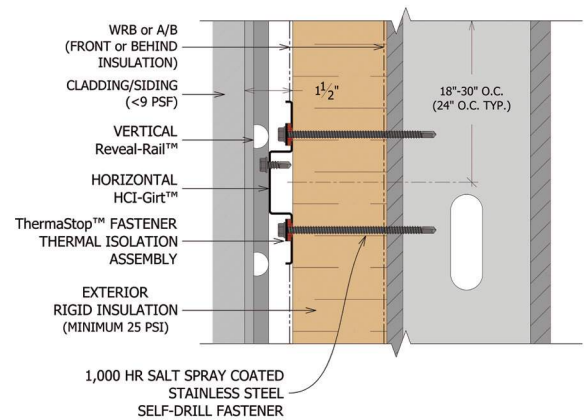
**KNIGHT WALL SYSTEMS. WHERE BUILDING ENVELOPE TECHNOLOGY MEETS SUSTAINABILITY.**

Knight Wall Systems' award-winning HCI-System enables ASHRAE 90.1-compliant ci (continuous insulation) installation of vertical cladding. As a complement to the original vertical CI-System, the HCI-System allows vertical cladding to be attached directly to the HCI-Girt, eliminating the need for a secondary rail – lowering both material and labor costs, without extra assembly depth.

The HCI-System is a stiffened, ventilated horizontal rail (girt) designed to be installed over 25 psi exterior rigid board exterior insulation, with only thermally isolated fasteners penetrating the thermal barrier. Roll-formed in-house, the ¾" deep HCI-Girt is available in 16- or 18-gauge Zn-Al-Mg steel (standard or black Fluoropon coated) or stainless steel. As with our other Knight Wall rain screen attachment systems, should a cladding type require a secondary rail, Knight produces an assortment of standard and custom HCI-System vertical rails for use with many different cladding types.

Ideal for a variety of rain screen panels such as fiber cement, metal-panel and aluminum composite material (ACM) cladding, among others, the HCI-System can be used stand-alone or in combination with Knight's vertical CI-System, allowing any building envelope designer and installer greater design flexibility, wider cladding versatility, quicker installation—all equaling cost savings—while easily meeting North American energy code requirements.

## HCI-Girt Plus Reveal-Rail

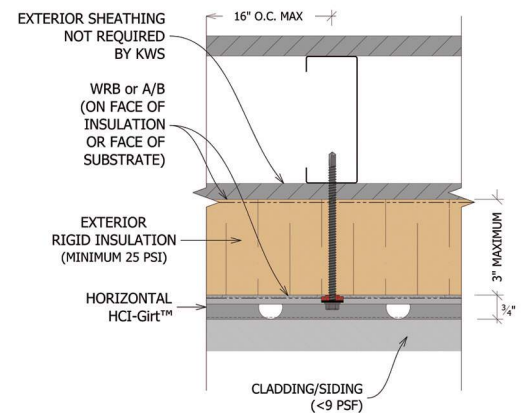
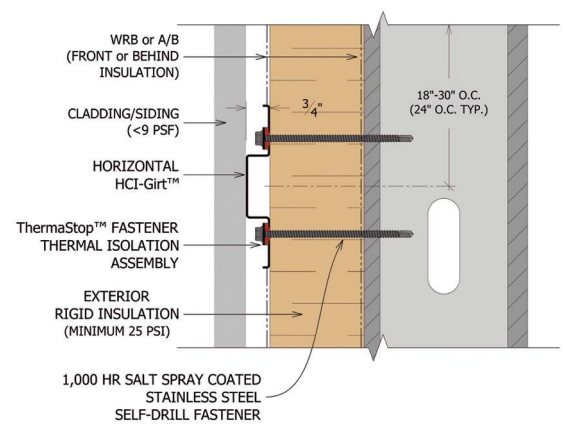


## ADVANTAGES TO THE KNIGHT HCI-SYSTEM™ RAIN SCREEN

- Horizontal HCI-Girts can be spaced up to 30" O.C.\*
- Supports claddings up to 9 PSF\*
- Even more labor savings with no trimming of exterior rigid board insulation around attachment system
- All fasteners penetrating the insulation are thermally isolated with preassembled washers (ThermaStop™)
- High corrosive-resistant Zn-Al-Mg ZM40 (ASTM A1046) coating for a long service life vs. typical G90 Galvanized steel
- Black Fluoropon finish and stainless steel options are competitively available
- Engineering calculations illustrating project specific compliance
- Attach nearly any cladding - supplied by any manufacturer - with easy and efficient installation and detailing
- Cladding can be attached to the horizontal HCI-Girts or used with optional vertical rails
- Excellent ventilation with a constant 3/4-inch minimum continuous rain screen cavity
- Competitive, budget conscious assembly
- All components are pre-engineered and third-party tested for proven performance and durability
- Complete, drop-in rain screen attachment system – girts, isolated fasteners, rails and engineering – one source
- Limited labor and material warranty

\*Maximum allowable spacing & dead load (weight of cladding) is based on total load (dead + live) acting on the assembly. Wall anchors should be specified & supplied by Knight for written limited warranty. Knight will specify the exact anchor type, embedment depth and spacing for anchors in project specific engineering packages (required for written limited warranty). ThermaStop thermal isolation washers must always be used with the HCI or CI-System, no matter what wall anchor is used. Contact KWS for more information.

### HCI-Girt Only



### KNIGHT WALL CAN CONTRIBUTE TO THE FOLLOWING USGBC LEED CREDITS:

- Energy & Atmosphere (EA) Prerequisite and Credit 1
- Materials & Resources (MR) Credits 4 and 5



**ALL KNIGHT WALL SYSTEMS COMPONENTS ARE MANUFACTURED IN THE USA.**

NO EXPRESS WARRANTIES ARE GIVEN EXCEPT FOR ANY APPLICABLE WRITTEN WARRANTIES SPECIFICALLY PROVIDED BY KNIGHT WALL SYSTEMS. ALL IMPLIED WARRANTIES INCLUDING THOSE OF MERCHANTABILITY AND FITNESS FOR A PARTICULAR PURPOSE ARE EXPRESSLY EXCLUDED. No freedom from any patent owned by Knight Wall Systems or others is to be inferred. Because use conditions and applicable laws may differ from one location to another and may change with time, Customer is responsible for determining whether products and the information in this document are appropriate for Customer's use.

## KNIGHT WALL SYSTEMS

28308 N Cedar Road, Deer Park, WA 99006  
[www.knightwallsystems.com](http://www.knightwallsystems.com)  
 1-855-597-9255 (KWS-WALL)  
 509.262.0104